

2.0 GIT Installation

Git is a free, open source repository for code (where PAMPRO is hosted). It needs to be available in order to download the PAMPRO software.

INSTALLING GIT ON Linux:

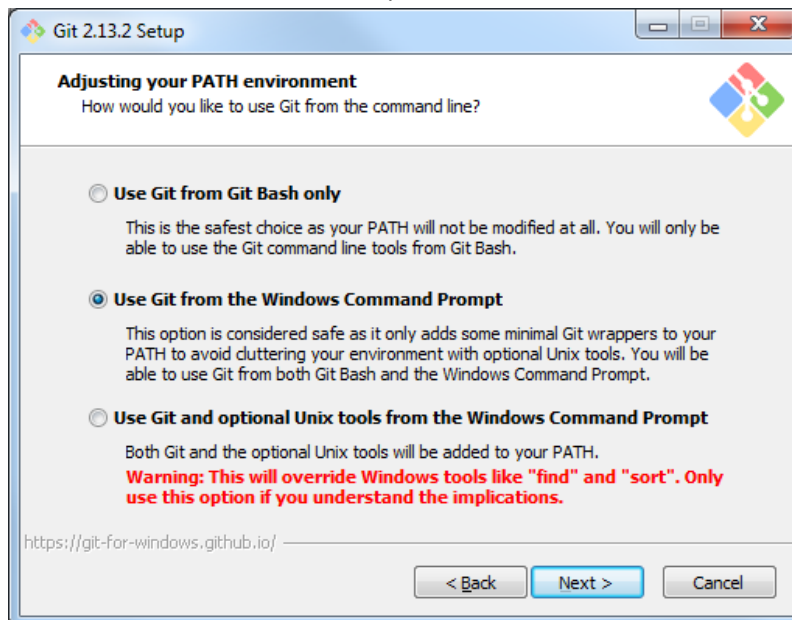
Git should already be installed on the Linux system. Git provides various commands to download and update the latest version of the source code. To test if git is installed type *git* into the command line. If it is installed, similar options as below should appear:

```
[pa.test@b08 ~]$ git
usage: git [--version] [--exec-path[=GIT_EXEC_PATH]] [--html-path]
        [-p|--paginate|--no-pager] [--no-replace-objects]
        [--bare] [--git-dir=GIT_DIR] [--work-tree=GIT_WORK_TREE]
        [--help] COMMAND [ARGS]
```

If not, please speak to the local IT Team to ensure git is installed correctly. The link to download git is as follows: <https://git-scm.com/>

INSTALLING GIT ON Windows:

- Download the installation package
- Run the .exe installation package on Windows
- (MRC-EPI users: install latest version from P:\Install\Git\Git - Command line)
- Use all the default installation options:



- Run a command line, (Windows icon, search“cmd”)
- From a command line, type “git”. Which should indicate git is now installed.
- If it is NOT installed successfully you will see “'git' is not recognized as an internal or external command, operable program or batch file”.